



INSPIRING A GENERATION
SINCE 2012

THE **F**ACTS SPEAK FOR THEMSELVES

thefactoryyz.org |  [thefactoryyz](https://www.facebook.com/thefactoryyz) |  [@thefactoryyz](https://twitter.com/thefactoryyz) | 0161 203 5333

The Factory Youth Zone, 931 Rochdale Road, Harpurhey, Manchester M9 8AE

Registered Charity No. 1134580

Figures and statistics correct at time of printing



INSPIRING A GENERATION

Since 2012 The Factory Youth Zone has been giving more and more young people the inspiration and support to improve their lives beyond measure. With some charities it's hard to know how they have an impact, but with us it's easy to see how much of a difference we've made in such a short time.

Check the facts and stats for yourself.



2155

AVERAGE TOTAL MEMBERS IN THE LAST 12 MONTHS



995

AVERAGE WEEKLY VISITS



MEMBER STATISTICS

MEMBER ETHNICITY BREAKDOWN

BLACK, ASIAN OR OTHER MINORITY ETHNIC GROUP



WHITE BRITISH

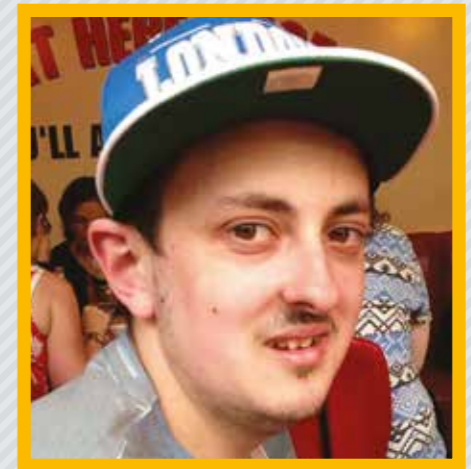


This is consistent with the ethnicity breakdown of the local population

ADDITIONAL NEEDS

IN THE PAST YEAR ALONE, THE 'A LEVEL PLAYING FIELD' PROJECT HAS INCREASED MEMBERSHIP OF YOUNG PEOPLE WITH ADDITIONAL NEEDS BY JUST UNDER 400%

(From 61 in March 2014 to 235 in June 2015)



"THE FACTORY HAS GIVEN ME LOTS OF OPPORTUNITIES THAT I WOULDN'T HAVE HAD IF I DIDN'T COME HERE."

ROSS, 21, MEMBER AND YOUNG AMBASSADOR





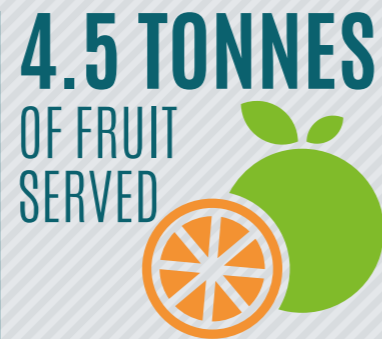
NO MEAL
EVER COSTS
OVER
£1



HEALTHY LIFESTYLE



240
SPORT SESSIONS
RUN EACH MONTH



OVER THE LAST 12 MONTHS,
VOLUNTEERS HAVE
CONTRIBUTED OVER
8,300
HOURS
THIS EQUATES TO A SAVING OF
£107,900



OF VOLUNTEERS ARE NORTH
MANCHESTER RESIDENTS

VOLUNTEERING



ANTHONY MOVED INTO WORK AFTER 18 YEARS OF UNEMPLOYMENT THANKS TO VOLUNTEERING AT THE FACTORY AND THE CONTINUED SUPPORT OF HIS PARTNER. SPEAKING ABOUT THE IMPACT OF GETTING INTO WORK, HE SAID:

“PEOPLE HAVE MORE RESPECT FOR ME, I CAN HOLD MY HEAD UP HIGH AND I’VE GOT A SPRING IN MY STEP. EVERYONE HAS NOTICED THE CHANGE IN ME.”



EMPLOYABILITY

NUMBER OF YOUNG PEOPLE
PLACED INTO WORK OVER
THE LAST 12 MONTHS

31



76%
OF YOUNG PEOPLE WHO COMPLETED
THE GET A JOB COURSE MOVED
INTO EMPLOYMENT, EDUCATION
OR TRAINING

MENTORING

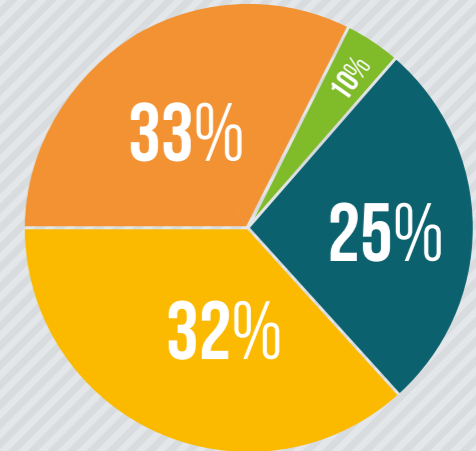
44



44 YOUNG PEOPLE HAVE BEEN ON THE PROGRAMME IN THE LAST
12 MONTHS. THE PROGRAMME IS EXPANDING TO INCLUDE
JUNIOR MEMBERS IN 2016

FINANCES

FOR EVERY **£1** SPENT,
84P GOES ON SUPPORTING
YOUNG PEOPLE,
6P ON GENERATING FUNDS &
INCOME AND **10P** ON
RUNNING THE CHARITY



INCOME COMES FROM:

- 33% DONATIONS AND FUNDRAISING
- 25% MANCHESTER CITY COUNCIL
- 10% MEMBERSHIP FEES AND TRADING
- 32% GRANTS AND TRUSTS

ACTIVITIES AND OPENING TIMES

THE FACTORY ISN'T JUST
OPEN IN THE EVENING



ACROSS THE WEEK WE ARE OPEN FOR OVER

70 HOURS



AS WELL AS OUR CORE JUNIOR
AND SENIOR SESSIONS, WE
PROVIDE TARGETED SPORTS
SESSIONS ON SUNDAYS, AS
WELL AS HIRING THE FACILITY
OUT TO EXTERNAL BOOKINGS

WE PROVIDE A LARGE NUMBER OF ACTIVITIES, INCLUDING:



Our youth work programmes also help young people develop their awareness of a range of issues, including healthy relationships, illegal substances and safety. We prepare them for the future, ensuring they have the skills and confidence to add to the community.